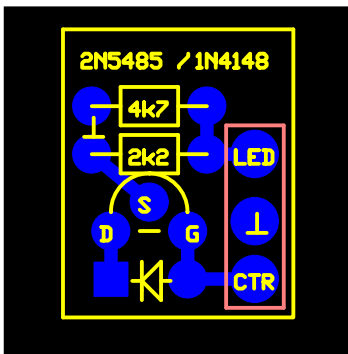
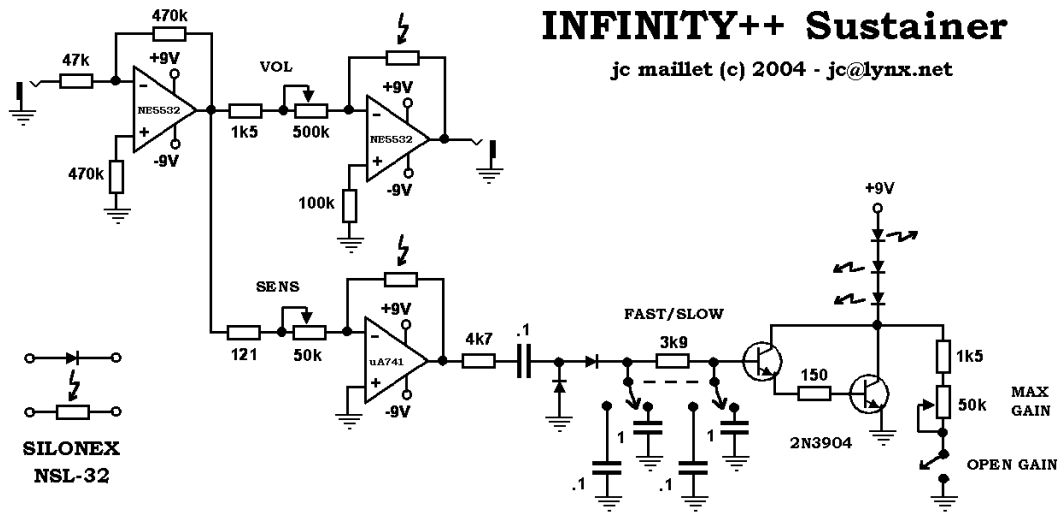
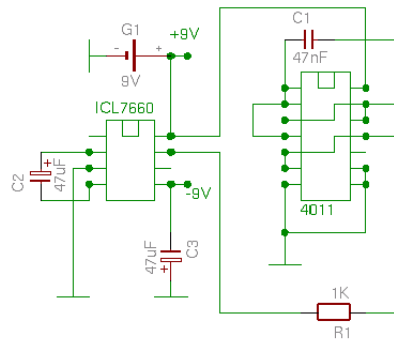


INFINITY++ Sustainer

jc maillet (c) 2004 - jc@lynx.net



Millenium Bypass



ICL Pump With Generator

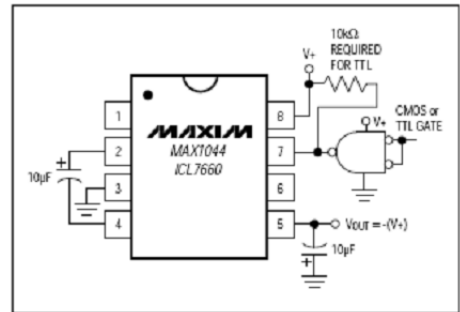
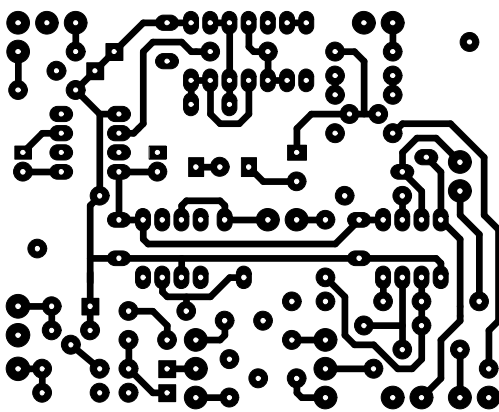


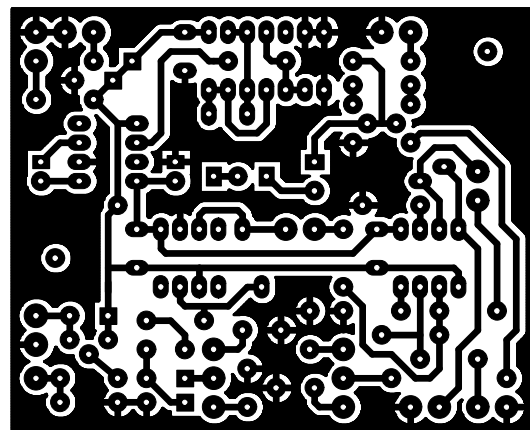
Figure 7. External Clocking

ICL/MAX Negative Voltage With Generator

INFINITY ++ from a Single 9V Battery with Millenium Bypass - Scale 1:1

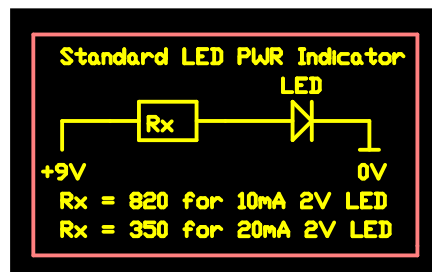


Bottom Layer Without Ground



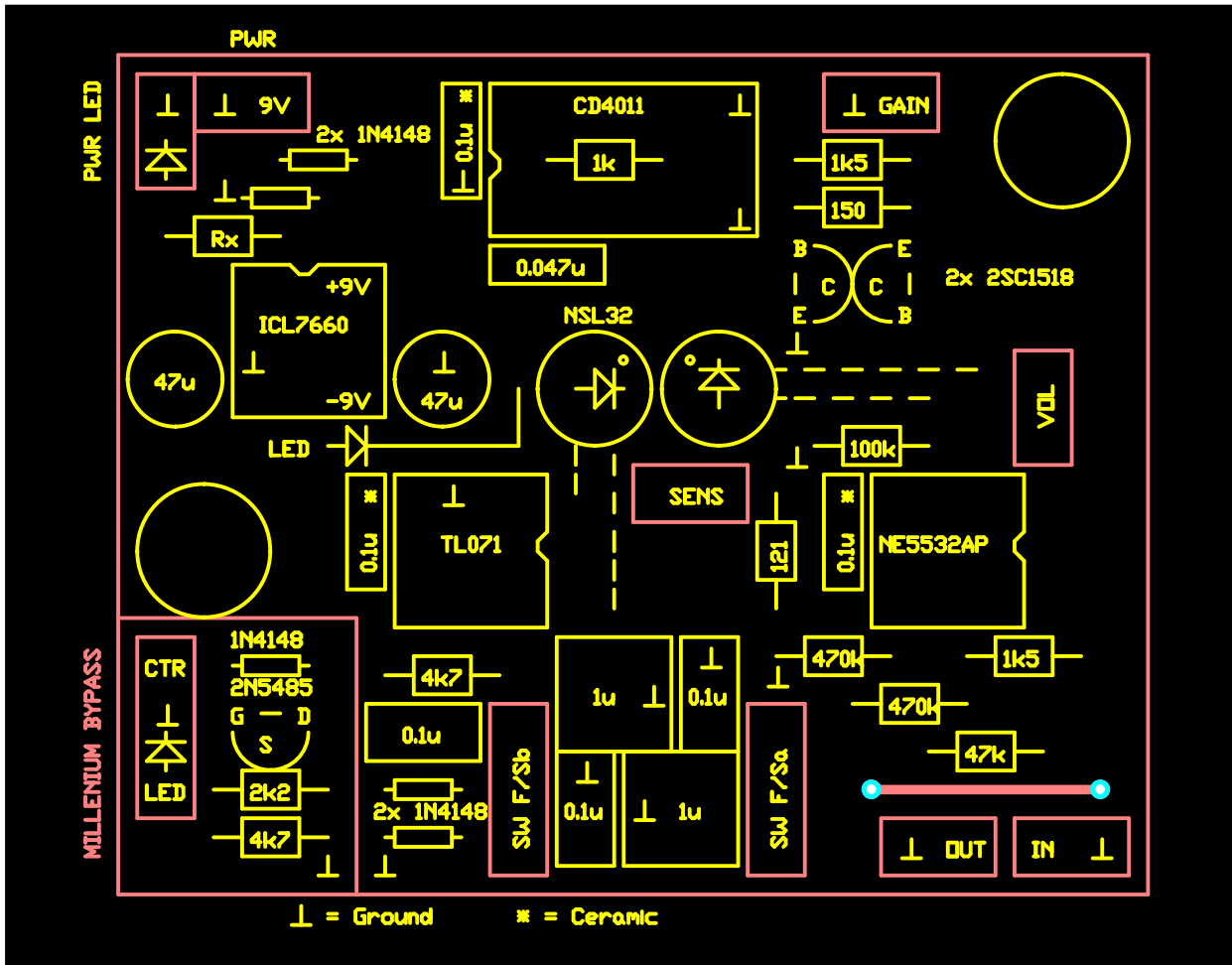
Bottom Layer With Ground

All caps used are Panasonic ECQV or ECQB series.
 * 0.1uF bypass caps are ceramic
 Rx= 820R for 10mA 2V LED
 Rx= 350R for 20mA 2V LED
 Transistor are 2SC1518 and all diodes are 1N4148

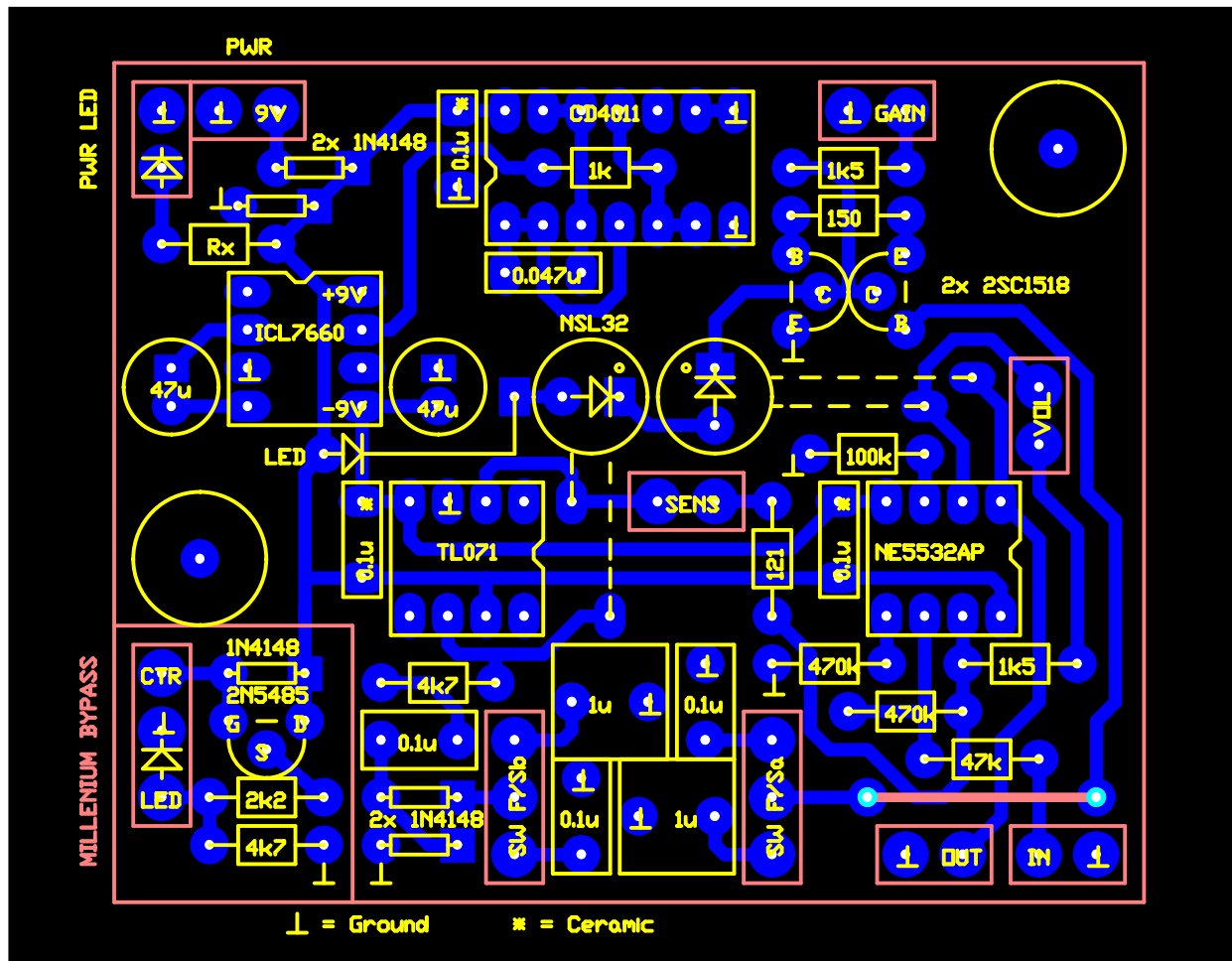


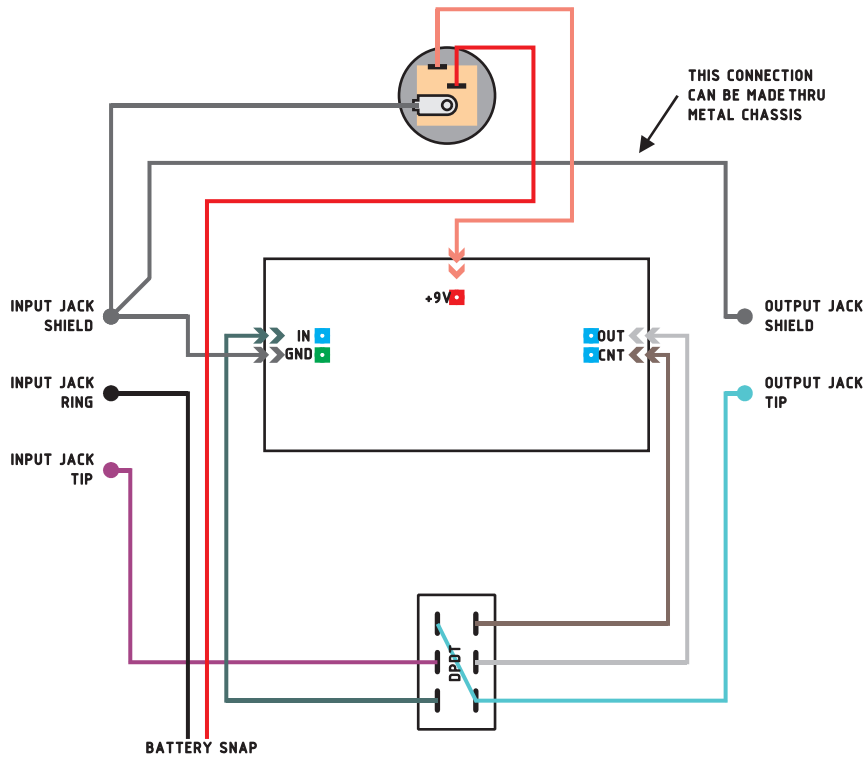
Rx in PCB for 9V power supply. I do not use batteries.
 Use LED in series calculator for Rx and LED

Top Layer

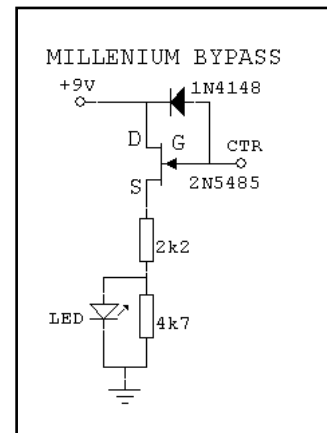


Top Overlay and Bottom Layer





Input jack power switching
 DPDT bypass switching
 Millennium bypass On Board
 DC Jack



Schematic
 effect on

